



**SAVINO DEL BENE®**

Global Logistics and Forwarding Company

# COMPANY PRESENTATION

# THE COMPANY

**Savino Del Bene**, which bears the name of its founder, was established in Florence in the early 1900s. The company's initial focus was on the development of trade lanes between Italy and the USA. Today, Savino Del Bene is a global company specialized in logistics and supply chain management, offering a variety of services in the form of ocean, air and truck shipments around the world.



**Savino Del Bene provides worldwide services, with more than 4300 employees, 172 own branches, 113 subsidiary offices and strategic partnerships.**

# OUR CAPABILITIES

**We offer advanced shipping services,** customs clearance, warehouse management and a wide range of logistics products. We constantly strive to enhance our relationships with core air and ocean carriers, from whom Savino Del Bene demands the highest quality and flexibility in order to provide its customers the best services at the most competitive rates.

Our experience in various market sectors and areas makes our company a **reliable partner for all industries** requiring shipping and transportation services. For over **100 years, together with our** customers' valued support, we have been able to keep an eye on future global challenges, hence ensuring the certainty of our long term mutual success.



# SAVINO DEL BENE | WORLDWIDE



 FLORENCE, ITALY  
GLOBAL HEADQUARTERS

 285 GLOBAL GROUP OFFICES

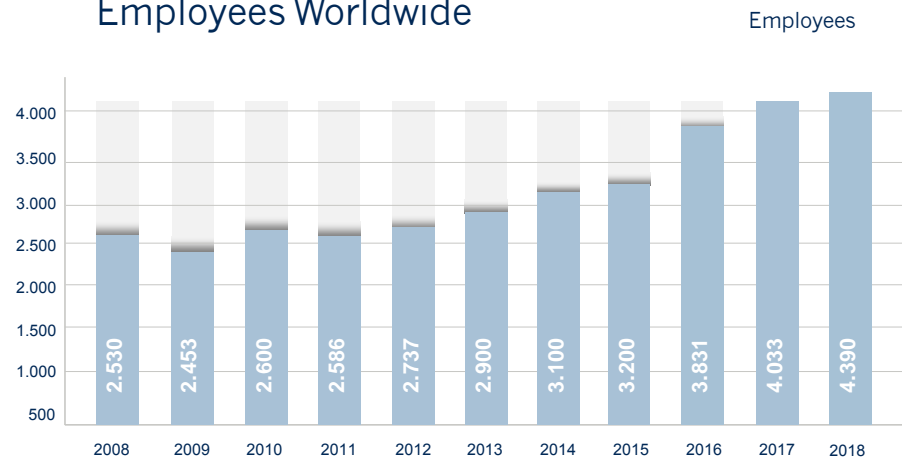
 172 SAVINO DEL BENE

 113 SISTER COMPANIES

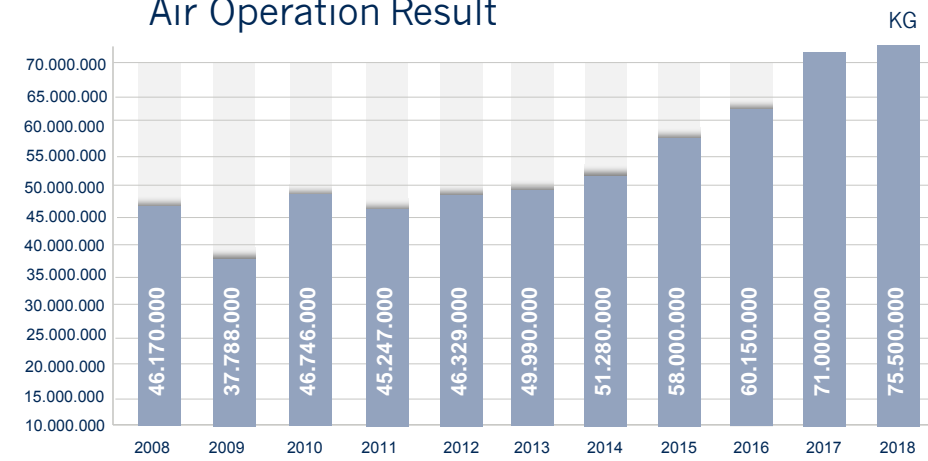
 38 LOCAL WAREHOUSES

# COMPANY FIGURES OVER THE LAST 10 YEARS

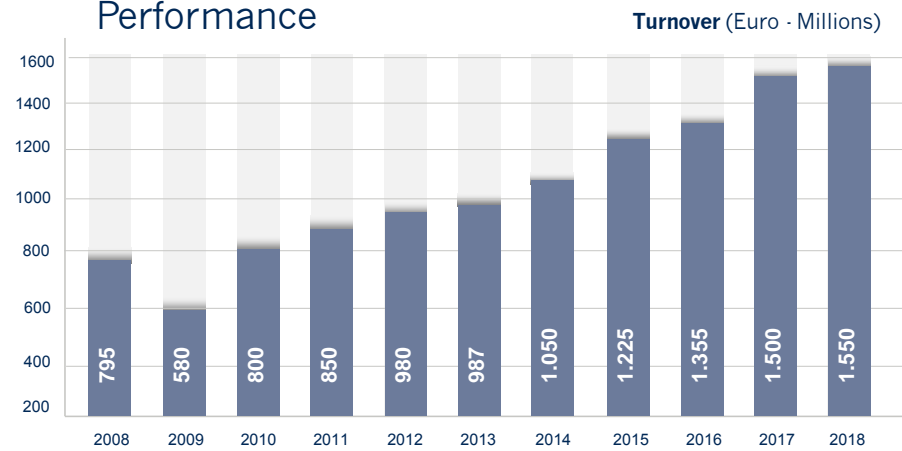
## Employees Worldwide



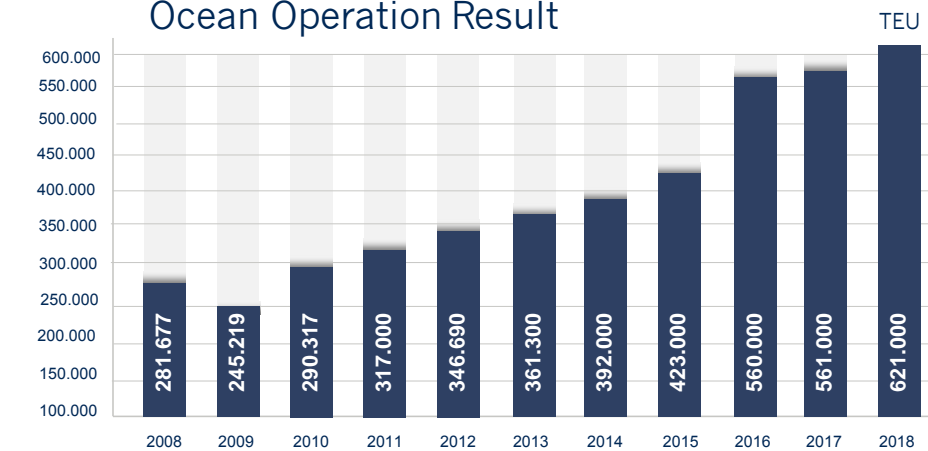
## Air Operation Result



## Performance



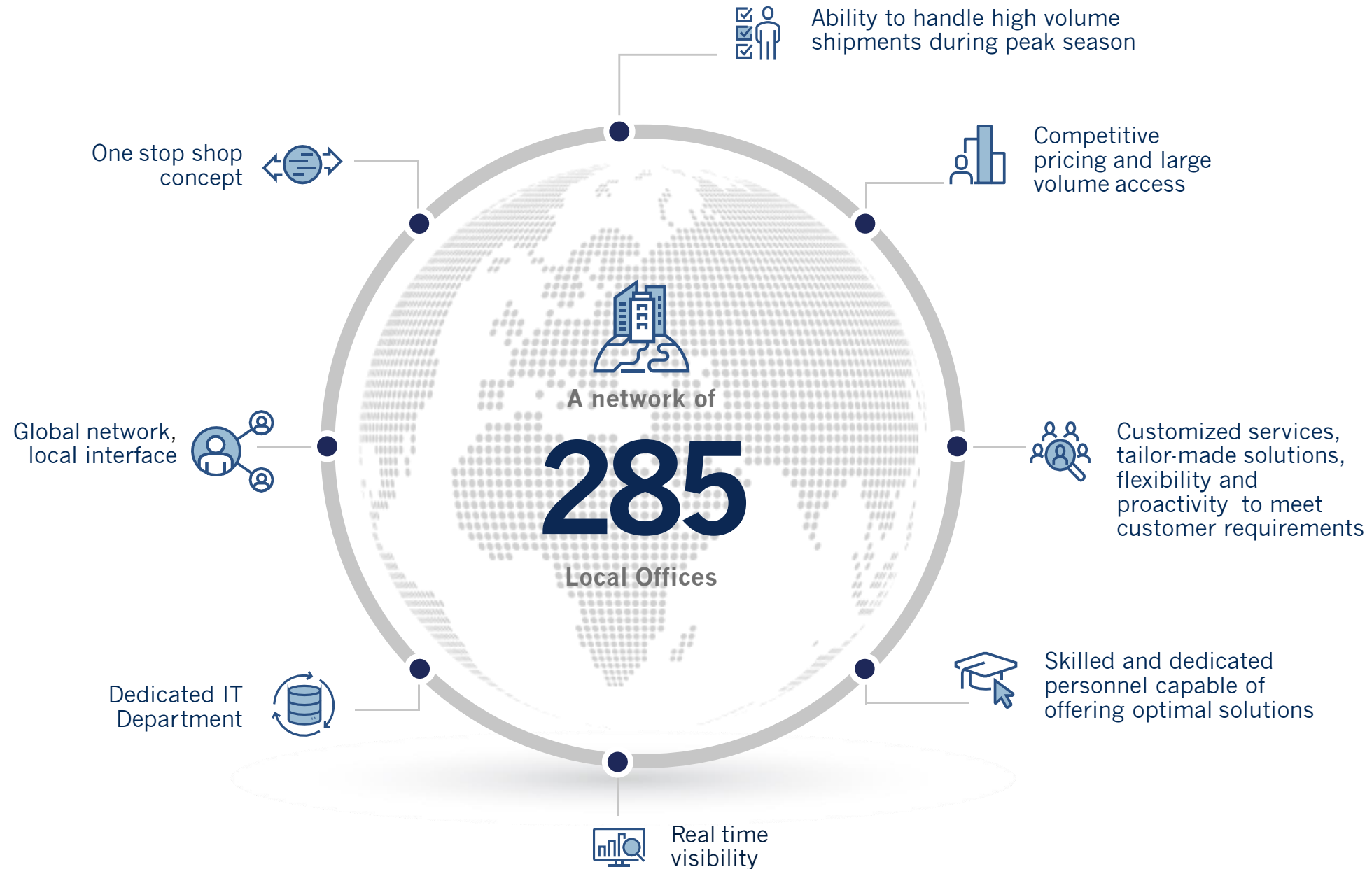
## Ocean Operation Result





# WHY SAVINO DEL BENE?

PEOPLE / PROCESSES / TECHNOLOGY



# VERTICAL MARKETS



## FASHION WHOLESALE & RETAIL

- Express Service
- Hanging garment warehouse
- Pick & pack and distribution
- Specialized preclearance customs broker
- High-level transportation security supply chain



## FOODSTUFF & BEVERAGES

- Dedicated capacity allotments
- Expertise in cool chain maintenance
- A qualified, industry - specialized dedicated team
- Highly specialized services: FCL/LCL dry and reefer



## FRESH FRUIT & VEGETABLES

- Quality control for frozen and fresh products
- Port handling and phytosanitary inspections
- Pre-carriage and distributions

[View our Fresh Fruit & Vegetables video](#)



## PHARMACEUTICALS & HEALTHCARE

- Certified freight forwarder
- Unbroken cool chain
- Specialized documentation
- High-level transportation security supply chain

[View our Pharmaceutical & Healthcare video](#)



## FURNITURE & HOUSEWARE

- Warehousing service
- 24/7 delivery
- Global Office Network

# VERTICAL MARKETS



## MARBLE, STONE & CERAMIC TILES

- Offices located close to major supplier and importers
- Individual Business Case Review
- Fully compliant practices

[View our Marble, Stone & Ceramic Tiles video](#)



## RENEWABLE ENERGY

- Specialized logistics planning expertise
- Multimodal services
- Special equipment



## OIL & GAS PROJECT CARGO

- Off-shore transportation (Air, Sea, Bulk)
- On-shore transportation (Domestic transportation & Handling at job-site)
- EHS & Quality compliance



## NGO'S & INSTITUTIONS PROJECTS

- Recognized partner by Governmental and Non-Governmental Organizations
- Experience in handling both long-term projects and unforeseen crisis
- Cross movement of all kind of commodities and humanitarian aid
- Ability to reach and provide services to unconnected and critical locations



# VERTICAL MARKETS



## MACHINERY

- Over-size cargo
- Long-term contracts
- Spare parts “just in time” delivery



## AUTOMOTIVE

- Full and partial automotive charter flights
- Solutions for all kinds of shipments, from standard to critical (prototypes)
- Door-to-door delivery and distribution of tyres and auto components



## CHEMICALS

- Shipment and delivery of dangerous, hazardous, flammable IMO classified goods
- Iso Tanks, Flexi tanks and liner bag for liquid and bulk commodities
- Qualified hauliers according to ISO and SQAS standards
- High-level transportation security supply chain



## ELECTRONICS

- Experience dealing with the leading suppliers
- Aggregate value services
- Experienced at managing shipments of technological material
- High-level transportation security supply chain

# SEA FREIGHT

## SERVICES



- FCL (any type of equipment)
- LCL ( including dry and controlled temperature)
- Worldwide door-to-door delivery for FCL and LCL shipments
- Controlled temperature shipments
- Cool chain maintenance and data recording
- Oversized, Project Cargo, Break Bulk and hazardous cargo shipments
- Global cross trade
- Dangerous and Hazardous cargo shipments
- Bonded facilities and customs brokerage
- Customized security services



**SAVINO DEL BENE®**

Global Logistics and Forwarding Company



# AIR FREIGHT SERVICES



- Worldwide air consolidations for any destination
- Express service
- Charter service
- Hand carry service
- Door-to-door service
- G.O.H. Service (hanging garments)

- Perishable, Oversize, Pharma, Dangerous goods freight management
- Bonded facilities and customs brokerage
- Customized Security services (Strap System)

[View our STRAP System video](#)



**SAVINO DEL BENE®**

Global Logistics and Forwarding Company



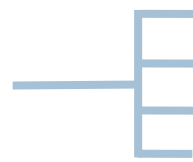


# OVERLAND TRANSPORT SERVICES



Savino Del Bene manages all types of international overland transport, offering flexible and convenient solutions.

*We provide services for every need:*



FTL (Full Truck Load) Service  
LTL (Less Truck Load) Service  
Combined Air – Sea transport  
Regular Transportation across Europe and CIS Countries

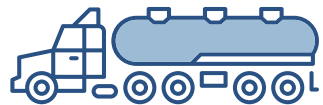
*Savino Del Bene's transport services include:*

**Refrigerated** transport | **Dangerous** Goods by Road (ADR) | **Oversized** loads

# OVERSIZE & RAIL TRANSPORT SERVICES



Savino Del Bene offers a variety of additional services to meet every customer need.



## HEAVY & OVERSIZE TRANSPORT

Deploying its own equipment to haul heavy and oversize freight throughout Italy and continental Europe, Savino Del Bene has proven to be highly regarded by the breakbulk and industrial cargo market worldwide.



## EURO-ASIAN LANDBRIDGE

The fastest rail connection between Europe and Asia. Savino Del Bene deals with the distribution of incoming goods and picking up outgoing goods.

***Included services:***

Pick-up/delivery service, unloading/loading facility, customs formalities, T1 and waybill issuance, storage and distribution service, fixing & lashing, sorting and labelling.

**From/To:**  
Warsaw/Hamburg/Duisburg



**From/To:**  
Far East & Southeast Asia via Suzhou terminal



# LOGISTICS

AND MORE...



- Warehouse / Container freight station
- In-house WMS
- IT solutions for business
- Bonded warehouses
- Security area for high-value cargo and Fashion
- Distribution center: Pick & Pack and Cross Dock
- Storage

**We integrate processes**



**Retail**



**B2B**



**B2C**

**into our Vertical Markets**



**SAVINO DEL BENE®**

Global Logistics and Forwarding Company



# TECHNOLOGY SERVICES



Savino Del Bene has its own IT department which is fully and exclusively dedicated to improving its logistics and forwarding e-services.

- One Global Information and Technology System
- WebPortal
- P.O. Management Platform & e-Booking
- Track & Trace System
- WMS - Warehouse Management System
- EDI - Electronic Data Interchange
- Customized statistics reporting





## CERTIFICATIONS:



EU Regulated Air Cargo Agent



IT AEOF 090113



CHINA CLASS A



KOREA AEO

## ACCREDITATIONS:



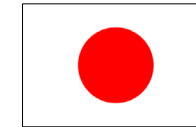
AMS/AAMS



SFI Provider



ACI



AFR



e-AWB



**GDP Compliant**  
GOOD DISTRIBUTION PRACTICES





**SAVINO DEL BENE®**

Global Logistics and Forwarding Company

**SAVINO DEL BENE S.p.A.**  
**WORLDWIDE HEADQUARTERS**

Via del Botteghino, 24/26/28A

50018 Scandicci (FI) - Italy

Ph: +39 055 52191 Fax: +39 055 721288

[headquarters@savinodelbene.com](mailto:headquarters@savinodelbene.com)

[www.savinodelbene.com](http://www.savinodelbene.com)