



120  
YEARS  
*Anniversary*

YOUR PARTNER SINCE 1899

**SAVINO DEL BENE®**

Global Logistics and Forwarding Company

# COMPANY PRESENTATION

# THE COMPANY

**Savino Del Bene**, which bears the name of its founder, was established in Florence in 1899. The company's initial focus was on the development of trade lanes between Italy and the USA. Today, Savino Del Bene is a global company specialized in logistics and supply chain management, offering a variety of services in the form of ocean, air and truck shipments around the world.



**Savino Del Bene provides worldwide services, with more than 4400 employees, 174 own branches, 108 subsidiary offices and strategic partnerships.**

# OUR CAPABILITIES

**We offer advanced shipping services,** customs clearance, warehouse management and a wide range of logistics products. We constantly strive to enhance our relationships with core air and ocean carriers, from whom Savino Del Bene demands the highest quality and flexibility in order to provide its customers the best services at the most competitive rates.

Our experience in various market sectors and areas makes our company a **reliable partner for all industries** requiring shipping and transportation services. For over **100 years, together with our** customers' valued support, we have been able to keep an eye on future global challenges, hence ensuring the certainty of our long term mutual success.





# SAVINO DEL BENE | WORLDWIDE



FLORENCE, ITALY  
GLOBAL HEADQUARTERS



282 GLOBAL  
GROUP OFFICES



174 SAVINO  
DEL BENE



108 SISTER  
COMPANIES



38 LOCAL  
WAREHOUSES

120  
Anniversary

YOUR PARTNER SINCE 1899



**SAVINO DEL BENE®**

Global Logistics and Forwarding Company





# COMPANY FIGURES



120  
Anniversary

YOUR PARTNER SINCE 1899



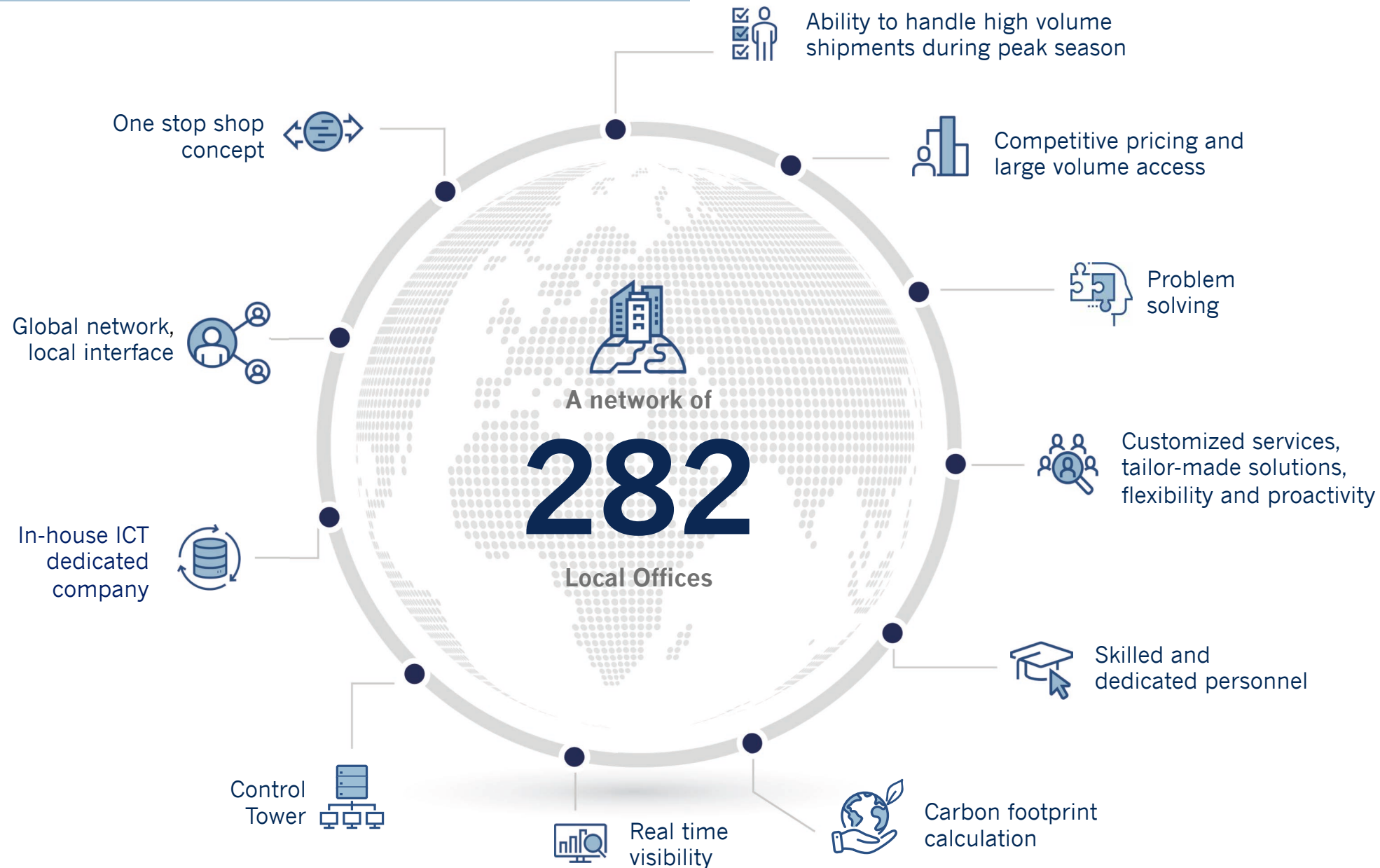
**SAVINO DEL BENE®**

Global Logistics and Forwarding Company



# WHY SAVINO DEL BENE?

PEOPLE / PROCESSES / TECHNOLOGY / SUSTAINABILITY



120  
Anniversary

YOUR PARTNER SINCE 1899



**SAVINO DEL BENE®**

Global Logistics and Forwarding Company



# VERTICAL MARKETS



## FASHION WHOLESALE & RETAIL

- Express Service
- Hanging garment warehouse
- Pick & pack and distribution
- Specialized preclearance customs broker
- High-level transportation security supply chain



## FOODSTUFF & BEVERAGES

- Dedicated capacity allotments
- Expertise in cool chain maintenance
- A qualified, industry - specialized dedicated team
- Highly specialized services: FCL/LCL dry and reefer



## FRESH FRUIT & VEGETABLES

- Quality control for frozen and fresh products
- Port handling and phytosanitary inspections
- Pre-carriage and distributions

[View our Fresh Fruit & Vegetables video](#)



## PHARMACEUTICALS & HEALTHCARE

- Certified freight forwarder
- Unbroken cool chain
- Specialized documentation
- High-level transportation security supply chain

[View our Pharmaceutical & Healthcare video](#)



## FURNITURE & HOUSEWARE

- Warehousing service
- 24/7 delivery
- Global Office Network

120  
Anniversary

YOUR PARTNER SINCE 1899



**SAVINO DEL BENE®**

Global Logistics and Forwarding Company





# VERTICAL MARKETS



## MARBLE, STONE & CERAMIC TILES

- Offices located close to major supplier and importers
- Individual Business Case Review
- Fully compliant practices

[View our Marble, Stone & Ceramic Tiles video](#)



## RENEWABLE ENERGY

- Specialized logistics planning expertise
- Multimodal services
- Special equipment



## OIL & GAS PROJECT CARGO

- Off-shore transportation (Air, Sea, Bulk)
- On-shore transportation (Domestic transportation & Handling at job-site)
- EHS & Quality compliance



## NGO'S & INSTITUTIONS PROJECTS

- Recognized partner by Governmental and Non-Governmental Organizations
- Experience in handling both long-term projects and unforeseen crisis
- Cross movement of all kind of commodities and humanitarian aid
- Ability to reach and provide services to unconnected and critical locations

120  
Anniversary

YOUR PARTNER SINCE 1899



**SAVINO DEL BENE®**

Global Logistics and Forwarding Company



# VERTICAL MARKETS



## MACHINERY

- Over-size cargo
- Long-term contracts
- Spare parts “just in time” delivery



## AUTOMOTIVE

- Full and partial automotive charter flights
- Solutions for all kinds of shipments, from standard to critical (prototypes)
- Door-to-door delivery and distribution of tyres and auto components



## CHEMICALS

- Shipment and delivery of dangerous, hazardous, flammable IMO classified goods
- Iso Tanks, Flexi tanks and liner bag for liquid and bulk commodities
- Qualified hauliers according to ISO and SQAS standards
- High-level transportation security supply chain



## ELECTRONICS

- Experience dealing with the leading suppliers
- Aggregate value services
- Experienced at managing shipments of technological material
- High-level transportation security supply chain

120  
Anniversary

YOUR PARTNER SINCE 1899



**SAVINO DEL BENE®**

Global Logistics and Forwarding Company



# SEA FREIGHT

## SERVICES



- FCL (any type of equipment)
- LCL ( including dry and controlled temperature)
- Worldwide door-to-door delivery for FCL and LCL shipments
- Controlled temperature shipments
- Cool chain maintenance and data recording
- Oversized, Project Cargo, Break Bulk and hazardous cargo shipments
- Global cross trade
- Dangerous and Hazardous cargo shipments
- Bonded facilities and customs brokerage
- Customized security services

120  
YEARS  
Anniversary

YOUR PARTNER SINCE 1899



**SAVINO DEL BENE®**

Global Logistics and Forwarding Company





# AIR FREIGHT

## SERVICES



- Worldwide air consolidations for any destination
- Express service
- Charter service
- Hand carry service
- Door-to-door service
- G.O.H. Service (hanging garments)
- Perishable, Oversize, Pharma, Dangerous goods freight management
- Bonded facilities and customs brokerage
- Customized Security services (Strap System)
- [View our STRAP System video](#)

120  
YEARS  
Anniversary

YOUR PARTNER SINCE 1899



**SAVINO DEL BENE®**

Global Logistics and Forwarding Company



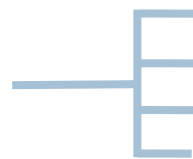
# OVERLAND TRANSPORT

## SERVICES



Savino Del Bene manages all types of international overland transport, offering flexible and convenient solutions.

*We provide services for every need:*



- FTL (Full Truck Load) Service
- LTL (Less Truck Load) Service
- Combined Air – Sea transport
- Regular Transportation across Europe and CIS Countries

*Savino Del Bene's transport services include:*

**Refrigerated** transport | **Dangerous** Goods by Road (ADR) | **Oversized** loads

120  
Anniversary

YOUR PARTNER SINCE 1899



**SAVINO DEL BENE®**

Global Logistics and Forwarding Company





# OVERSIZE & RAIL TRANSPORT SERVICES



Savino Del Bene offers a variety of additional services to meet every customer need.



## HEAVY & OVERSIZE TRANSPORT

Deploying its own equipment to haul heavy and oversize freight throughout Italy and continental Europe, Savino Del Bene has proven to be highly regarded by the breakbulk and industrial cargo market worldwide.



## EURO-ASIAN LANDBRIDGE

The fastest rail connection between Europe and Asia. Savino Del Bene deals with the distribution of incoming goods and picking up outgoing goods.

### ***Included services:***

Pick-up/delivery service, unloading/loading facility, customs formalities, T1 and waybill issuance, storage and distribution service, fixing & lashing, sorting and labelling.

**From/To:**  
Warsaw/Hamburg/Duisburg



**From/To:**  
Far East & Southeast Asia via Suzhou terminal

120  
Anniversary

YOUR PARTNER SINCE 1899



**SAVINO DEL BENE®**

Global Logistics and Forwarding Company





# LOGISTICS

## AND MORE...



- Warehouse / Container freight station
- In-house WMS
- IT solutions for business
- Bonded warehouses
- Security area for high-value cargo and Fashion
- Distribution center: Pick & Pack and Cross Dock
- Storage

### We integrate processes



Retail



B2B



B2C

into our **Vertical Markets**

120  
Anniversary

YOUR PARTNER SINCE 1899



**SAVINO DEL BENE®**

Global Logistics and Forwarding Company



# TECHNOLOGY SERVICES



Savino Del Bene has its own IT department which is fully and exclusively dedicated to improving its logistics and forwarding e-services.

- One Global Information and Technology System
- WebPortal
- P.O. Management Platform & e-Booking
- Track & Trace System
- WMS - Warehouse Management System
- EDI - Electronic Data Interchange with carriers, customers, authorities, etc.
- Customized statistics reporting
- Online booking
- E-commerce
- Customers webportal always evolving to continuously fulfill customers needs



120  
Anniversary

YOUR PARTNER SINCE 1899



**SAVINO DEL BENE®**

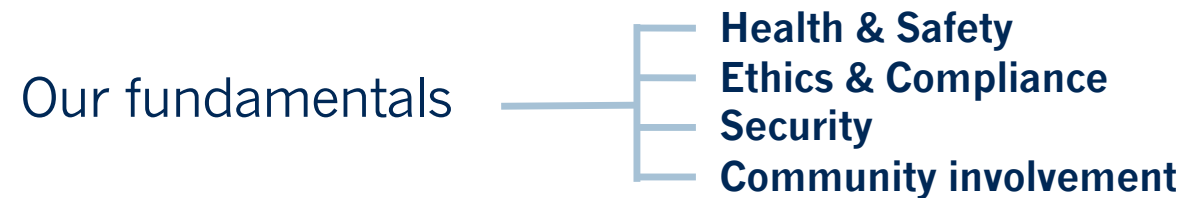
Global Logistics and Forwarding Company



# CORPORATE SOCIAL RESPONSIBILITY



Savino Del Bene is committed to implementing social activities that have a positive impact on both the local and **global community**. We set ambitious new targets annually to focus on continually improving our already **high standards** as well as operating according to policies and procedures which integrate **social, environmental, ethical** factors into business operations and core strategy – all in close collaboration with stakeholders.



120  
Anniversary

YOUR PARTNER SINCE 1899



**SAVINO DEL BENE®**

Global Logistics and Forwarding Company





# COMMITTED TO FUNDAMENTALS

## HEALTH & SAFETY

Savino Del Bene operates under Safety Management system requirements always striving to provide and sustain safe and healthy working conditions to ensure the safety and security of our company assets.

## ETHICS & COMPLIANCE

The Company adopted an Organization, Management and Control Model pursuant to the Italian Legislative Decree no. 231. It is our policy to conduct business in compliance with ethical standards defined by laws, regulations and governance codes with a strong commitment to the highest standards of ethics. We do not accept any form of bribery and we are committed to abiding by the anti-bribery laws in force in all countries in which we operate.

## SECURITY

Savino Del Bene acknowledges the importance of maintaining the integrity and security of the international supply chain. We work together with our carriers, vendors, suppliers and clients to promote security measures and programs.

## COMMUNITY INVOLVEMENT

The Company is committed to contribute to the well-being of the community, such as:

- Cooperating with local authorities, associations and institutions;
- Sponsoring projects to help the community;
- Ensuring safety and environmental sustainability;
- Donations to charity and associations to help those in need;
- Implementation of the “Carbon Footprint” to assist in measuring and controlling the release of CO2 emissions from our company.



120  
Anniversary

YOUR PARTNER SINCE 1899



**SAVINO DEL BENE®**

Global Logistics and Forwarding Company





# CERTIFICATIONS:



EU Regulated Air Cargo Agent



IT AEO 090113



CHINA CLASS A



KOREA AEO



# ACCREDITATIONS:



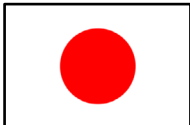
AMS/AAMS



SFI Provider



ACI



AFR



**GDP Compliant**  
GOOD DISTRIBUTION PRACTICES



120 YEARS

*Anniversary*

YOUR PARTNER SINCE 1899

**SAVINO DEL BENE®**

Global Logistics and Forwarding Company

**SAVINO DEL BENE S.p.A.  
WORLDWIDE HEADQUARTERS**

Via del Botteghino, 24/26/28A

50018 Scandicci (FI) - Italy

Ph: +39 055 52191 Fax: +39 055 721288

[headquarters@savinodelbene.com](mailto:headquarters@savinodelbene.com)

[www.savinodelbene.com](http://www.savinodelbene.com)