



SAVINO DEL BENE

Global Logistics and Forwarding Company



AIR
FREIGHT



OVERLAND



OCEAN
FREIGHT



INTEGRATED
LOGISTICS

Authorizations and certifications



UNI EN ISO 9001



UNI EN ISO 14001



CTPAT Program
Customs-Trade Partnership
Against Terrorism



UNI EN ISO 37001
Argentina



IT AEO 090113



ENAC



ECOVADIS



International
Air Transport
Association



TAPA



HACCP

GDP Compliant
GOOD DISTRIBUTION PRACTICES

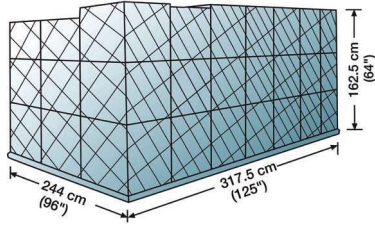
GDP

www.savinodelbene.com

ULD & SPECIAL EQUIPMENT

PMC Passenger & Freighter

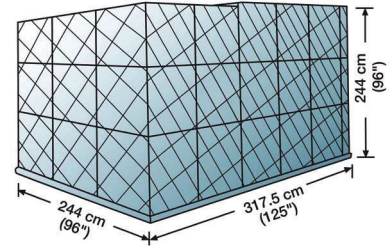
10 ft pallet contoured for lower deck



Volume: 10 cubic metres
Standard Tare Weight: 110 kg (including net)
Max Gross Weight: 6,804 kg
 (max gross weight is restricted per bay/position on aircraft)
IATA codes: P6P 10-ft flat pallet with net
Suitable for the following aircraft: 747, 767, 777, 787, DC-10, MD-11

PMC Q6 Freighter Only

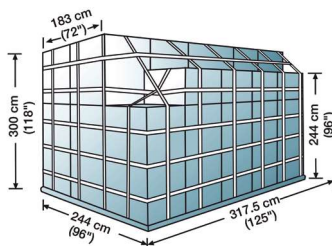
Contoured main deck pallet



Volume: 18.9 cubic metres
Standard Tare Weight: 110 kg
Max Gross Weight: 6,804 kg (Subject to aircraft bay/position)
IATA codes: P6C, P6P, PQP, PMC, PMP
Suitable for the following aircraft: A300, A310, A340, B747, B767, B777
Note: Contour code: A, Max height: 96", Base: 96", Top length: 96"
 Max height at contour side: 96"

PMC Q7 (Freighter Container)

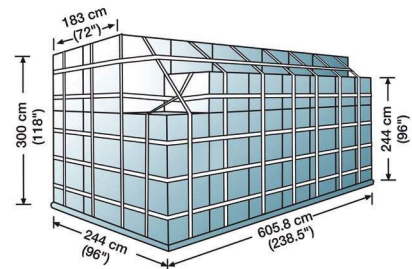
Contoured main deck pallet



Volume: 21.5 cubic m
Standard Tare Weight: 110 kg
Max Gross Weight: 6,804 kg
 (subject to aircraft bay/position)
IATA codes: PGA/PGFQ7
Suitable for the following aircraft: freighter only
Note: Contour code: D, Max. height: 118", Base: 96", Top length: 72" &
 Max height at contour side: 96"

PGA Freighter Only

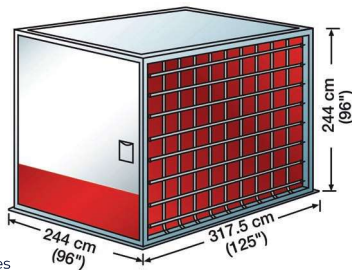
20 ft main deck pallet



Volume: 38.0 cubic metres
Standard Tare Weight: 540 kg
Max Gross Weight: 13,608 kg
 (Can be exceeded with prior approval from the Air Cargo Company)
IATA codes: P7A, P7E, P7F, PSG, PGE, PGA
Suitable for the following aircraft: B747-MD (freighter)

M1 (AMA Rectangular Container) Freighter

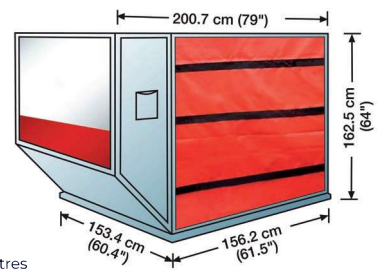
Full length main deck container



Volume: 17.5 cubic metres
Standard Tare Weight: 280 kg
Max Gross Weight: 6,804 kg
IATA code: AMA rectangular container on P6P base
Suitable for the following aircraft: 747F, 747 Combi, 777F center loading only

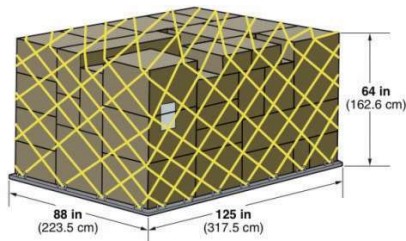
LD3 (AKE Contoured Container) Passenger

Half length freighter lower deck container



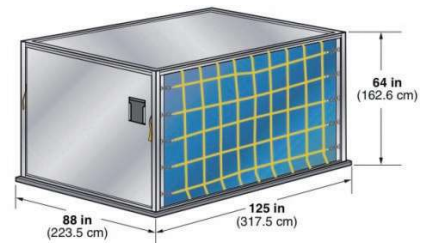
Volume: 4.5 cubic metres
Standard Tare Weight: 82 kg
Max Gross Weight: 1,587 kg
IATA codes: PIA, PIC, PID, PIG, PIP, PIX, PAG, PAJ, PAP, PAA, PAX
Suitable for the following aircraft: A300, A310, B747, B767, B777, A340

LD7 Passenger & Freighter



Volume: 10.7 cubic metres
Standard Tare Weight: 105 kg (including net)
Max Gross Weight: 4,626 kg
IATA codes: PAA, PAG, PAJ, PAP, PAX, PIA, PIC, PID, PIG
Suitable for the following aircraft: 707F, 727F, 737F, 757F, DC8F, DC9F main decks

LD9 Passenger & Freighter



Volume: 10.8 cubic metres
Standard Tare Weight: Canvas door, 215 kg (solid door 270 kg)
Max Gross Weight: Lower hold 4,624 kg; main deck 6,000 kg
IATA codes: AMP enclosed pallet on PIP base
Suitable for the following aircraft: 747, 767, 777, 787, DC-10, MD-11 lower hold



SAVINO DEL BENE

Global Logistics and Forwarding Company